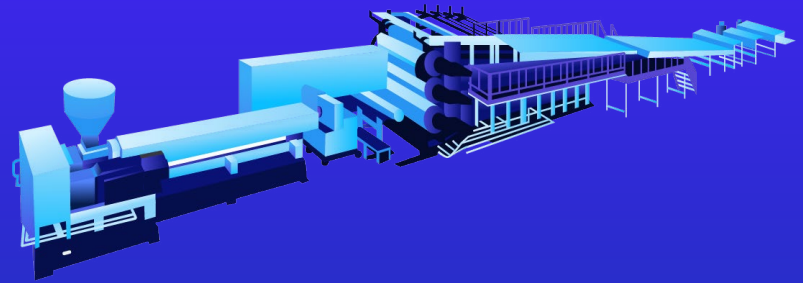


# Real Time Data Collection, Visualization, & Analytics

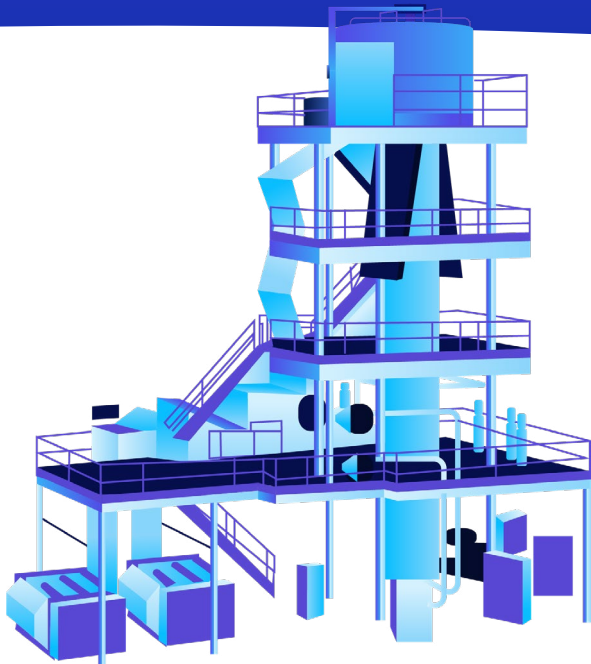


## Optimizing Sheet & Film Extrusion Processes

Sightline EDM™ is a powerful Industrial Internet of Things (IIoT) platform that allows process engineers, maintenance managers, and continuous improvement teams to quickly diagnose, predict, and prevent quality defects, line stops, and other performance issues that negatively impact plant efficiency and productivity. It collects, retains, visualizes, monitors, and analyzes production data in real-time to streamline operations and improve profitability.



Sightline's tool creates valuable insights from massive amounts of data from PLCs, smart sensors, and integrations with existing systems. No more spreadsheets; it automatically captures, analyzes, and displays thousands of data tags from production runs in subsecond increments.



### Sightline offers cutting-edge insights into production data along with critical live monitoring & alerts.

The system allows organizations to simultaneously analyze thousands of metrics from hundreds of sources with historian context, which makes it an ideal solution to optimize operations in complex systems; the sequential performance of so many automated steps makes both sheet and film extrusion lines well-suited to take advantage of these analytical features. Downstream converting processes depend on consistent and reliable extruded products.

**We offer peace of mind; it's why  
our renewal rate is over 97%.**

Collect continuous live machine data in minutes with our intuitive easy to use, mobile-friendly dashboards.



Real-time, subsecond root cause analysis of thousand of data points with customizable alert thresholds & 24/7 notifications of any issues



Designed to integrate with leading SCADA and MRP systems



Role-based access controls for different facilities, data security, and customized user views

# Sightline EDM™ Features



## Optimizing Sheet & Film Extrusion Processes

### Advanced Correlation to Automate Root Cause Analysis

- Quickly identify relationship between process data, performance metrics, and system faults
- Manual analysis and automated analysis in response to an alert

### Comparative Batch Cycle Time Analysis

- Run time comparison of different batches of a product to easily visualize unusual patterns or anomalies
- Easily compare batch run time
- Monitor centerline chatting to validate “golden batch” settings

### Easy to Use Dynamic Dashboards

- Create charts quickly using point and click interface
- Monitor and analyze real time process and performance data
- No queries required

### Analyze Different Batches of a Given Product

- Create summary or time series charts to compare different batches
- Identify “golden settings” associated with the best batches
- Overlay any type of business data (IoT#, supplier info, SKU, etc.) for analysis

### Forecasting Improves Predictive Maintenance & Planning

- Forecast future performance based on historical systems performance
- Dynamic alerting when an observation violets the upper or lower control boundaries
- Forecast alerting when future values exceed alert thresholds



## About Sightline

Sightline Systems offers real-time data intelligence solutions that leverage machine learning, allowing you to harness the power of AI to visualize millions of data points across systems, optimize performance, analyze root cause of issues, increase efficiency, predict future operations or downtime, and alert you to any anomalies, including potential security threats.